

RIP TEST

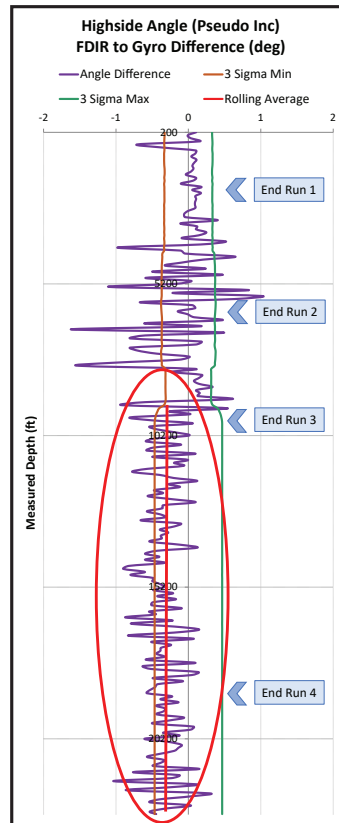
Redundant Instrument Performance

APPLICATION

Used primarily in post-drilling analysis, the RIP Test can provide a statistical assessment of the expected level of agreement that should exist for overlapping MWD & Gyro surveys based on the error models. Traditionally, in this scenario, the Gyro is accepted as the more accurate depiction of the wellbore position. However, this is not always the case and a RIP Test can provide an independent, 3rd party assessment of the highside and lateral angle differences between the MWD & Gyro surveys. The RIP Test has identified errors associated with both MWD & Gyro measurements and can assist in narrowing in on the source of the disagreement. Don't let your survey measurements go to waste!

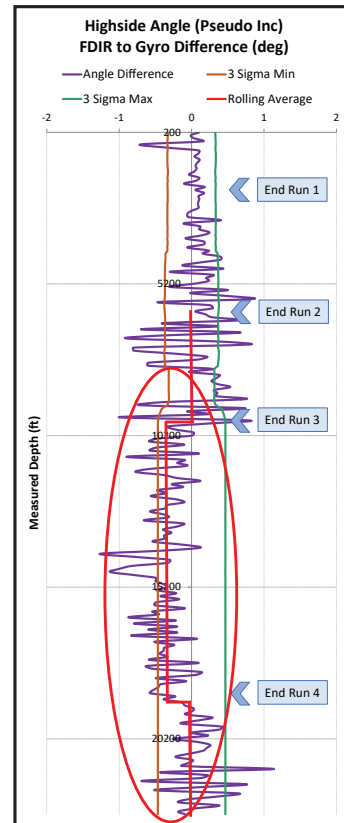


RIP Test (Gyro Error)



GYRO HIGH SIDE ANGLE DIFFERENCE PERSIST ACROSS MULTIPLE MWD RUNS

RIP Test (MWD Error)



HIGH SIDE ANGLE DIFFERENCE CHANGES ACROSS MULTIPLE MWD RUNS

FEATURES

- Agnostic to MWD/Gyro Provider
- Suitable for Use with all Gyro Configurations
- Advanced Statistical Analysis of Predicted Agreement

BENEFITS

- Explain Discrepancies Between MWD & Gyro Survey Logs
- Increased Confidence In Survey Measurement Accuracy
- Improved Understanding of the Well's Position
- Independent 3rd Party Assessment

info@superiorqc.com

superiorqc.com

 PATTERSON-UTI

patenergy.com